

## Flat 1, Highbury Court Highbury Road, Weston-Super-Mare, Sold Prior £126,000



- FOR SALE BY ONLINE AUCTION
- WEDNESDAY 23RD APRIL 2025
- VIDEO TOUR NOW ONLINE
- VIEWINGS – REFER TO DETAILS
- LEGAL PACK COMPLETE
- SOLD PRIOR TO AUCTION
- LEASEHOLD PURPOSE BUILT FLAT
- 2 BEDS | 661 Sq Ft | PARKING SPACE
- REQUIRES BASIC UPDATING
- EXTENDED 8 WEEK COMPLETION

Hollis Morgan – APRIL LIVE ONLINE AUCTION – A Leasehold TOP FLOOR 2 BED FLAT ( 661 Sq Ft ) with PARKING now in need of BASIC UPDATING

# Flat 1, Highbury Court Highbury Road, Weston-Super-Mare, North Somerset, BS23 2DR

## Accommodation

### FOR SALE BY LIVE ONLINE AUCTION

\*\*\* SOLD PRIOR TO AUCTION \*\*\*

GUIDE £125,000  
SOLD @ £126,000

ADDRESS | Flat 1 Highbury Court, Highbury Road, WSM, North Somerset BS23 2DR

Lot Number 55

The Live Online Auction is on Wednesday 23rd April 2025 @ 17:30  
Registration Deadline is on Monday 21st April 2025 @ 16:00

The Auction will be streamed LIVE ONLINE via the Hollis Morgan website & you can choose to bid by telephone, proxy or via your computer. Registration is a simple online process – please visit the Hollis Morgan auction website and click "REGISTER TO BID"

### THE PROPERTY

A Leasehold top floor purpose built flat with accommodation (661 Sq Ft) comprising lounge with separate kitchen two bedrooms and a bathroom plus off allocated off street parking  
Sold with vacant possession.

Tenure - Leasehold | 999 years from 1 January 1993 | circa 967 years left of the term unexpired.

Managt Fees - £150 per quarter

Ground Rent - £10 pa

Council Tax - Band B

EPC - C

Utilities, Rights & Restrictions - Please refer to the Legal Pack

Flood Risk - Please refer to the Legal Pack

### THE OPPORTUNITY

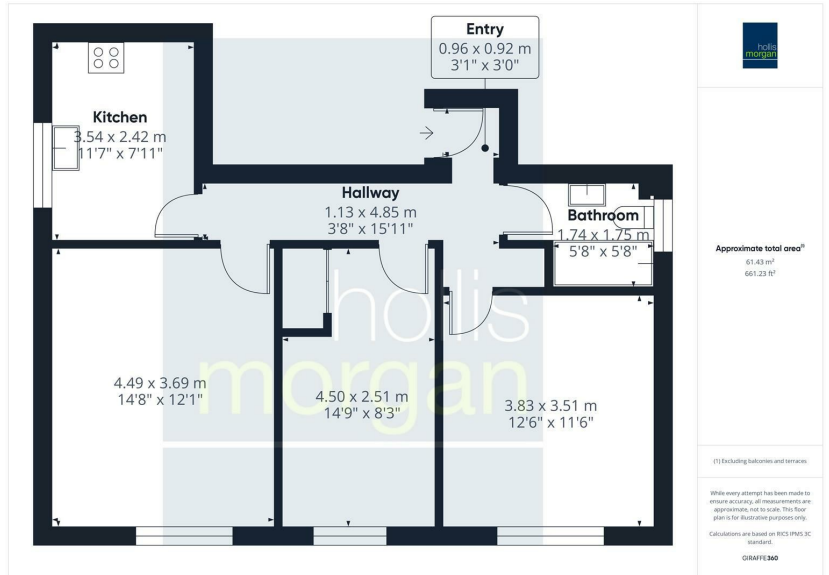
FLAT | UPDATING

The flat would now benefit from basic updating but has scope for a fine home or investment in this sought after seaside location.

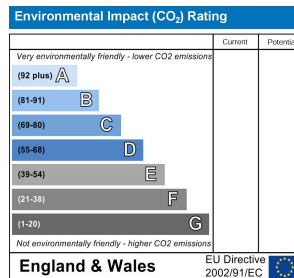
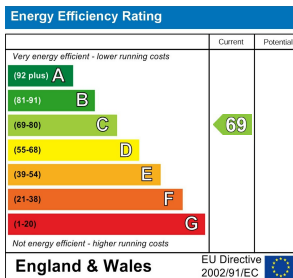
### LOCATION

Weston Super Mare is a popular seaside town located on the Bristol Channel coast of North Somerset situated approximately 18 miles (29 km) south-west of Bristol and has a population of approximately 80,000 people. The town has a long history as a popular holiday destination, with a sandy beach that stretches for over two miles (3.2 km) and a variety of attractions and activities for visitors. The town centre has a mix of old and modern buildings, with several historic landmarks such as the Grand Pier, the Winter Gardens Pavilion, and the Birnbeck Pier. Westons main attraction is its beach, which is backed by a wide promenade and a range of amenities such as cafes, restaurants, and shops. The Grand Pier is a popular destination for families, with a variety of fairground rides, arcade games, and attractions. The town also has several parks and green spaces, including the 12-acre Grove Park, which has a children's play area, a boating lake, and a miniature railway. Other popular parks include Clarence Park and Ashcombe Park, both of which offer picturesque settings for picnics and walks. Weston is well connected with the M5 motorway running nearby and regular train services to Bristol, Bath, and other major cities. The town also has its own railway station, which is located within walking distance of the town center and the beach.

## Floor plan



## EPC Chart



9 Waterloo Street

Clifton

Bristol

BS8 4BT

Tel: 0117 973 6565

Email: post@hollismorgan.co.uk

www.hollismorgan.co.uk

Hollis Morgan Property Limited, registered in England, registered 7275716.

Registered address, 5 Upper Belgrave Road, Clifton, Bristol BS8 2XQ

## Auction Property Details Disclaimer

Hollis Morgan endeavour to make our sales details clear, accurate and reliable in line with the Consumer Protection from Unfair Trading Regulations 2008 but they should not be relied on as statements or representations of fact.

Please refer to our website for further details.